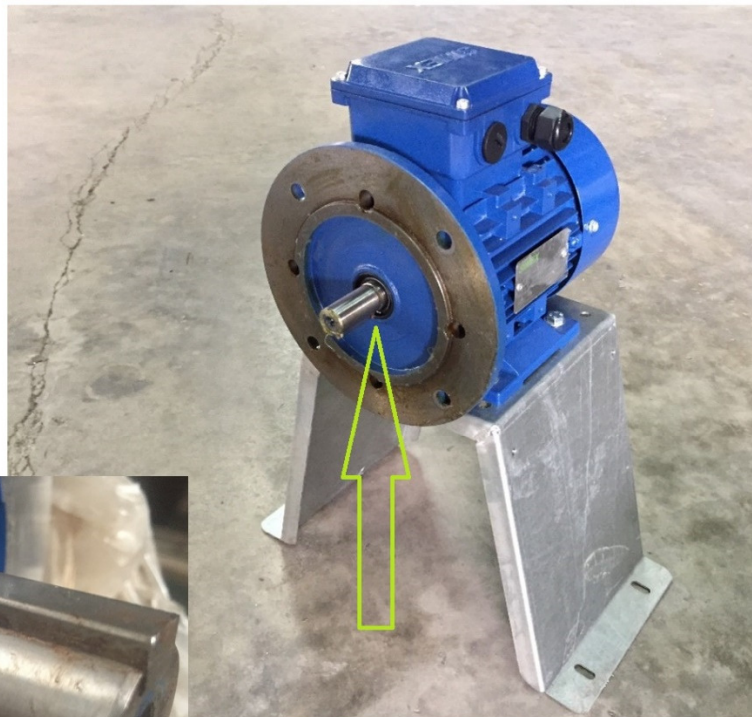
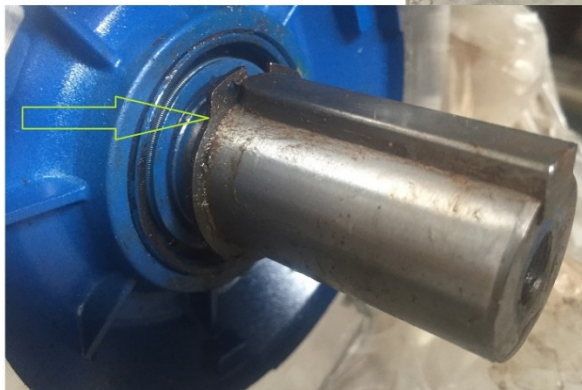


1. Prepare the fan parts and motor for assembly.



2. Install B35 or B34 foot cum flange motor on fan bracket with the screws and C clip provided.



3. Install fan casing on the motor with screws provided.



4. Install the PP impeller on the motor with impeller assembly screw.





5. Tighten the PP impeller with screw provided.



6. Install fan inlet on the casing.



7. Install motor cowl on fan bracket with screws provided.



8. Fan assembly completed!

